

SAMSUNG TECHWIN

SMARTVIEWER3.01

User Manual



SAMSUNG

Before installing or while using this program, visit the Samsung website www.samsungsecurity.com and download and upgrade with the latest S/W version available.



overview

CONTENTS

OVERVIEW	2	Contents
2	4	What is SmartViewer3.0?
	5	Key Features of SmartViewer3.0
	5	Terminology
INSTALLATION	6	Installation
6	7	To check the Installation Status
SMARTVIEWER	8	Log in/out
8	9	SmartViewer at a Glance
LIVE VIEWER	10	Name and function of each item in Live Viewer
10	12	Name and function of each item in the Video Window
	13	Connecting to or Disconnecting from the Device
	14	Camera List
	15	Alarm Out List & Control
	16	Event List
	18	List of Device Status Information
	18	Favorite List
	19	Digital Zoom
	21	PTZ Control
	23	To control the video of the Live Viewer
SEARCH VIEWER	26	Name and function of each item in Search Viewer
26	27	Device List
	27	Date Search
	27	Advanced Search
	28	Digital Zoom
	28	Searching for Playable Data
	30	Playback Control
	31	Backup

32	SETUP	
		32 Viewer Tab
		35 Device Tab
		38 User Tab
		40 Update Tab
		41 System Administration Tab
	43 Log Information Tab	

overview

WHAT IS SMARTVIEWER3.0?

SmartViewer3.0 is an access control tool that enables you to connect to and control a remote Samsung product on your PC via the network.

With this tool, you can access Samsung products anywhere around the world via the network, and check the video data from the connected cameras.

You can also search for and play recording data in the product on a remote site, which will be an effective and convenient monitoring system.

Compatibility

DVR (SHR-5xxx, SHR-6xxx, SHR-7xxx, SHR-8xxx, SRD-470, SRD-470D, SRD-471, SRD-830, SRD-830D, SRD-850, SRD-850D, SRD-851, SRD-870, SRD-870D, SRD-871, SRD-1610, SRD-1610D, SRD-1630, SRD-1630D, SRD-1650, SRD-1650D, SRD-1651, SRD-1670, SRD-1670D, SRD-1671)

System Requirements

CPU	Intel Pentium Core2 Duo 2.4GHz
DRAM	2GB or higher
VGA Adapter	128MB or higher DirectX 9.0 or later 1024X768 or higher
NIC CARD	100 MB Ethernet NIC (Gigabit Ethernet recommended)
OS	Windows XP(32bit) Professional SP2 Windows Vista(32bit) Business/Ultimate Windows 7(32bit) Professional/Ultimate/Enterprise

KEY FEATURES OF SMARTVIEWER3.0

- Live Viewer
 - Monitor a maximum of 36 videos from the connected cameras
 - Save up to 2 hours of video as one monitoring file
 - Support full screen mode
 - Add video to a desired position with the drag & drop method
 - Add video to the video screen by double-clicking
 - Support Sequence (automatic screen transition)
 - Favorite View & Sequence of Favorites
- Search Viewer
 - Play up to 16 videos simultaneously
 - Support range backup (integrated viewer)
 - Search for and play recording data in the DVR, which are sorted by the event type
- Setup
 - User login & access privilege setup
 - Register/Manage up to 3000 device
 - Create one group of multiple devices
(up to 100 groups, up to 4 devices for a group)
 - Save device configuration as a file
 - Save SmartViewer configuration as a file
 - Log Search (search by the system, user, record or backup log, etc)
- Update
 - Remote update using the update server

TERMINOLOGY

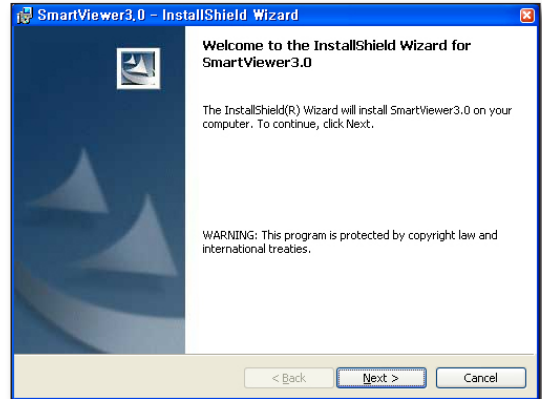
- Device : DVR that tries to access the network via SmartViewer.
- Tree : An area to show the information of devices, cameras, alarm events and users (groups) and their correlations.
- fps (frames per second) : UOM of informing how many frames will be displayed per second.
- Resolution : Size of an original video from a connected camera.
The following resolutions are predefined:
 - D1 : 704X480(NTSC), 704X576(PAL)
 - VGA : 640X480(NTSC), 640X576(PAL)
 - CIF : 320X240(NTSC), 352X288(PAL)

installation

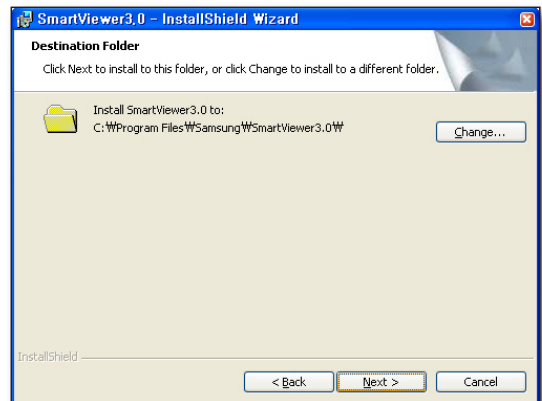
INSTALLATION

Install SmartViewer on a local PC and launch it.

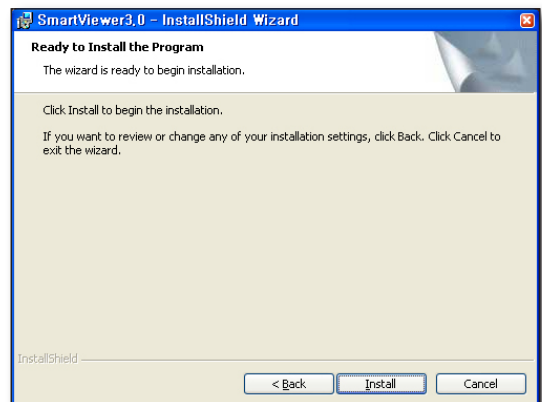
1. Run the executable of SmartViewer (Setup Launcher) that is included in the installation CD or stored in your PC.
2. When you see the installation guide screen, click [**N**ext >].



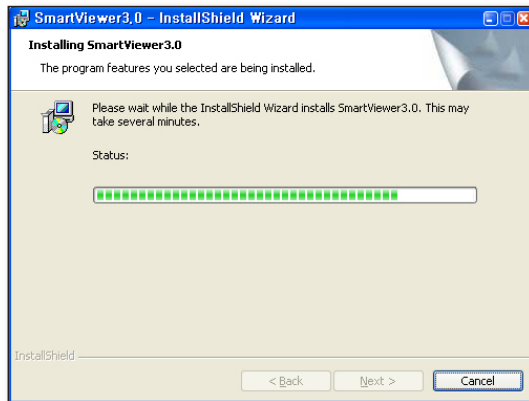
3. Specify the destination folder in which the installation files are copied.
The default path is "C:\Program Files\Samsung\SmartViewer3.0\".
 - To change the path, click [**C**hange...] and specify a desired path or select a folder.
4. To proceed with the next step, click [**N**ext >].



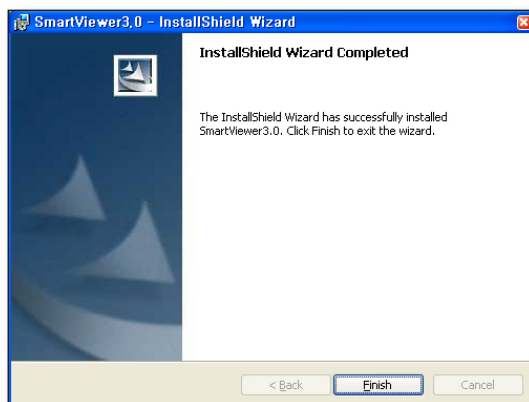
5. Click [**I**nstall] to start the installation.



6. Installing SmartViewer3.0 will proceed.



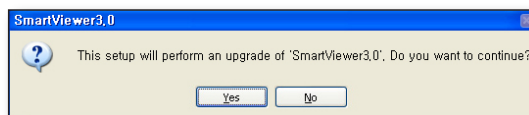
7. When the installation is completed, click [**Finish**] to exit the installation screen.



Upgrade

If you have SmartViewer installed on your PC, click the updater program to proceed with the upgrade.

1. Run the updater program, "**Setup Launcher**".
The confirmation dialog pops up.
2. Click [**Yes**].

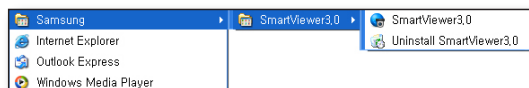


- 
As there is possibility of a program error right after the upgrade, it is recommended to restart the system.

TO CHECK THE INSTALLATION STATUS

When the installation is done, check if SmartViewer is installed properly.

1. Move to the <Start> menu.
2. If SmartViewer is installed properly, you will see two sub menus under SmartViewer3.0: <**SmartViewer3.0**> and <**Uninstall SmartViewer3.0**>.



SmartViewer

On your desktop, click the program icon that has been created automatically. SmartViewer3.0 gets started.

LOG IN/OUT

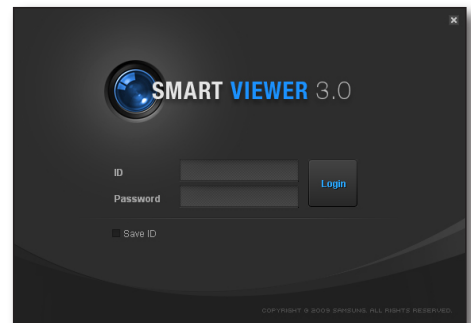
Login

To access SmartViewer, you must log in with a registered account at first.

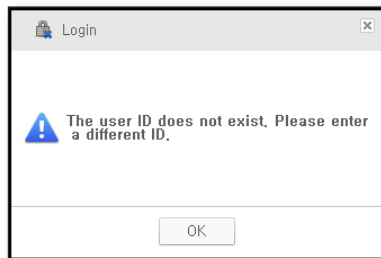
1. On your desktop, click the SmartViewer3.0 icon.
The login dialog should appear.
2. Provide the user ID and password.
Default ID : ADMIN
Password : 4321



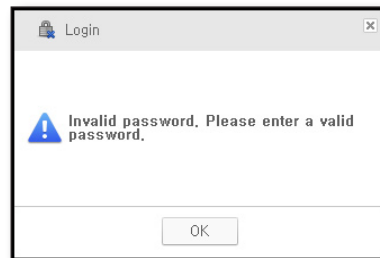
- If you have set <Auto Login(admin)> in the Setup menu, you will be logged in automatically when the program starts.



- The following is an example of login failure, where you will see the error message.



<If an unregistered account is entered>



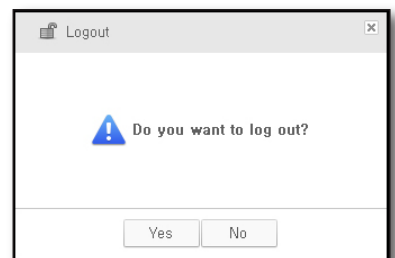
<If you enter an incorrect password>

Logout

When you have done with SmartViewer, log out to exit it.

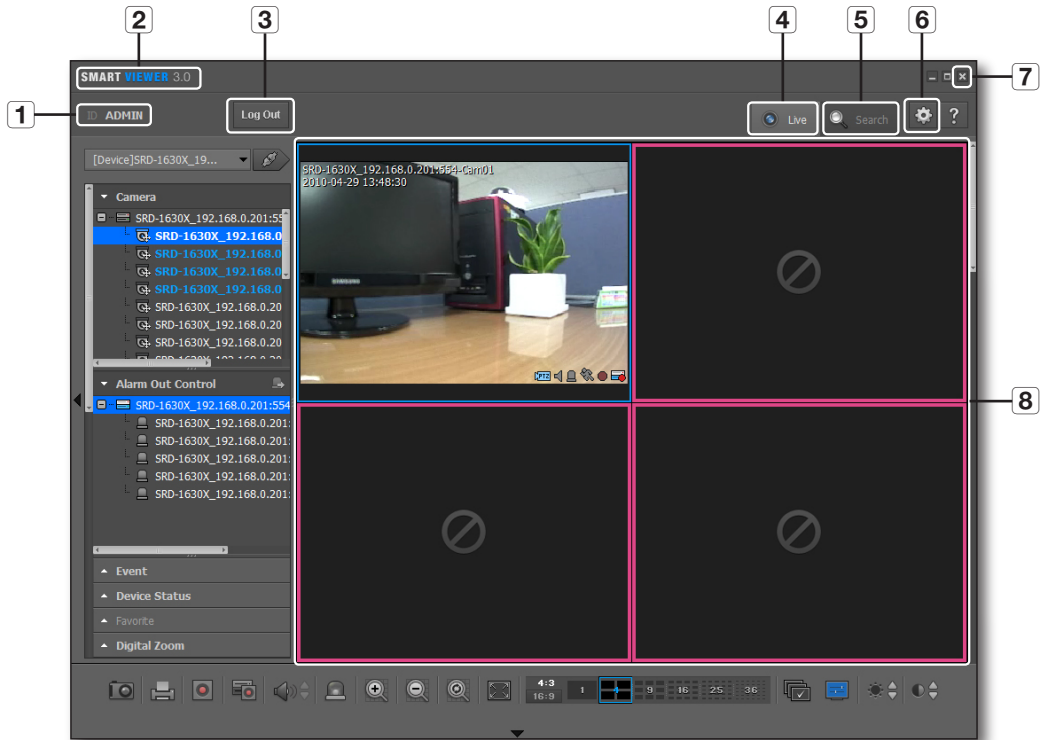
When you log out, the current screen configuration will be saved with all program windows closed, and you will return to the login dialog.

1. From the main window, click [**Logout**].
The logout dialog should appear.
2. Select [**Yes**] in the dialog.
You will be logged out.
If you exit SmartViewer, You will be logged out automatically.



SMARTVIEWER AT A GLANCE

SmartViewer3.0 Screen Configuration.



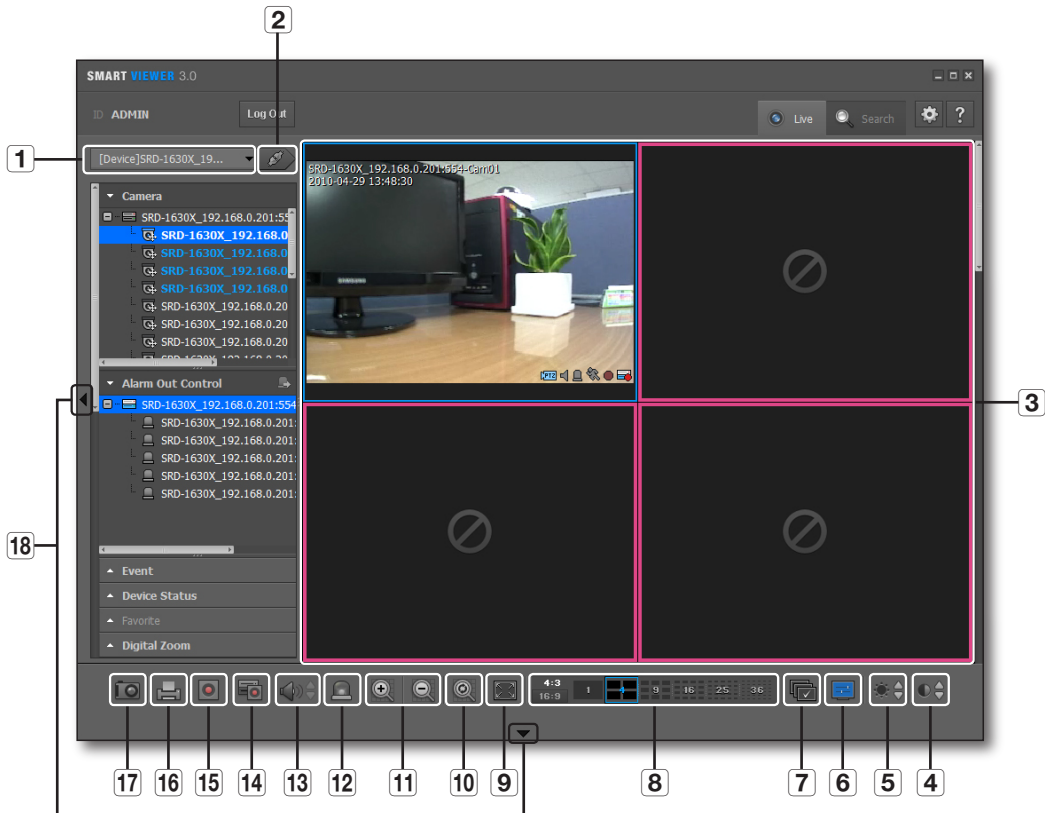
• SMARTVIEWER

Item	Description	
1	ID	Shows the user ID.
2	S/W title bar	Displays the name of the software.
3	Log out	Click to log out.
4	Live	Launches the Live Viewer.
5	Search	Launches the Search Viewer.
6	Setup	Open the setup screen.
7	Exit	Terminates the application.
8	Video Screen	Displays the Live Viewer or Search Viewer.

live viewer

From the top right corner of the SmartViewer main screen, click the [Live] tab.

NAME AND FUNCTION OF EACH ITEM IN LIVE VIEWER







Item	Description
1	Device List Displays the list of registered devices. It will show you only the connected devices when you have logged in.
2	Connect/Disconnect Connects to or disconnects from the device.
3	Video Screen Displays the Live Viewer screen.
4	Contrast You can adjust the contrast for the current screen.
5	Brightness You can adjust the brightness for the current screen.
6	OSD Shows/hides the screen tip.
7	Sequence Performs automatic transition of the selected split screens.
8	Switch Aspect Ratio Select an aspect ratio for display in the Live screen.

Item		Description
9	Full Screen	Displays the current video in full screen.
10	Factory Default	Returns the zoomed-in or –out screen to the default size (100%).
11	Zoom In/Out	Enlarges or collapses the image.
12	Remove Alarm Indicator	Removes the alarm indicator, which is displayed if an event occurs.
13	Volume Control	Use this to adjust the audio volume level.
	Speaker	Turns on or mutes the speakers.
14	DVR Recording	Performs or stops recording on the connected DVR.
15	Record	Performs or stops recording in the selected video window.
16	Print	Prints out the current video screen.
17	Save	Saves the current image on the selected video screen as a picture format.
18	Adjust Window Button	Displays or hides the menu window or the adjustment button.

Indications of the Video Input Status

You can check the input status of the camera video signal as follows:

1.  : Video Loss
2.  : Disconnected
3.  : Excessive concurrent users
4.  : Camera is turned off or in Covert mode

live viewer


NAME AND FUNCTION OF EACH ITEM IN THE VIDEO WINDOW



Item		Description
1	Camera Name	Shows the name of the device.
2	Date & Time	Displays the creation time and date of the video.
3	DVR Recording	Displays the recording status of the connected DVR: recording /stop.
4	Record	SmartViewer displays the recording status of the current PC: recording/stop.
5	Motion	The motion indicator is displayed if an event occurs from the connected camera.
6	Alarm	The alarm indicator changes the color if an event occurs.
7	Speaker	The speaker indicator displays the sound output status.
8	PTZ	The PTZ indicator shows the availability of PTZ of the connected device.

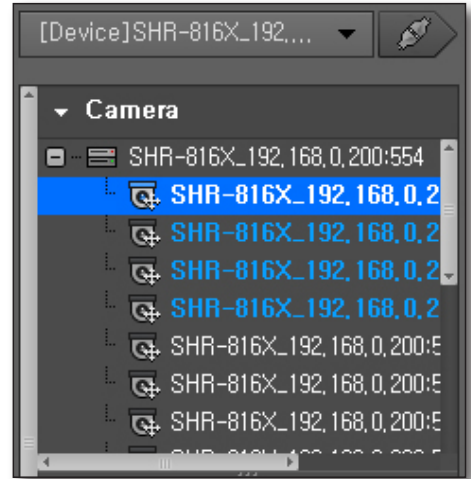
CONNECTING TO OR DISCONNECTING FROM THE DEVICE

To connect to the device

1. Select a device to connect to.
Only those devices or groups that are registered in the Setup menu will be listed.
2. Click the **[Connect ()]** button to the right of the device selection checkbox.
SmartViewer will try to connect to the selected device, and when connected, it will display a list of cameras that are connected to the device.

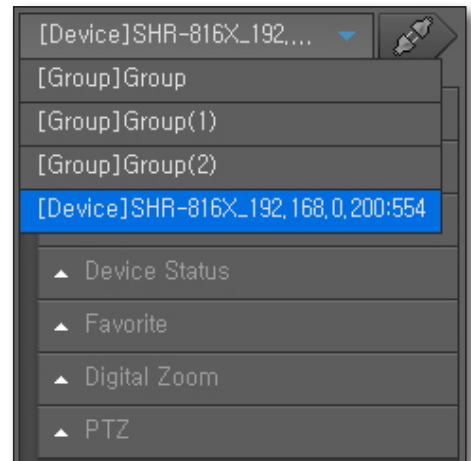


- To add a device to the list, see “**Setup > Device**” (page 35)
- To connect to multiple devices simultaneously, try that with “**Group**”.
- If you log in again after you logged out, you will be connected to the last device or group automatically.
- If you select a list and enter text (keyword), only those groups and devices that contain the text will be displayed in the search result. This is useful if you do the search for a long list of devices or groups.



To disconnect from the device

1. Press the **[Disconnect ()]** button.
2. The device will be disconnected and a list of all registered devices will be displayed.








live viewer

CAMERA LIST

When the device is connected successfully, you will see a list of cameras that are connected to the device.

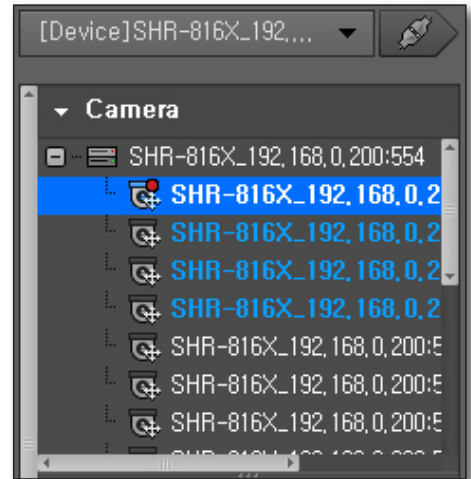
Camera icons & description

In the camera list, the icon to the left of the each camera name will show you the information of the specific camera.

1.  : General camera
2.  : PTZ compliant camera
3.  : Camera in recording
4.  : Disconnected
5.  : Camera in listening

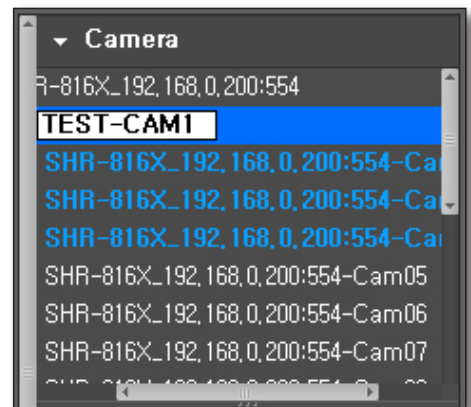


- More than one icon can be displayed next to one specific camera.



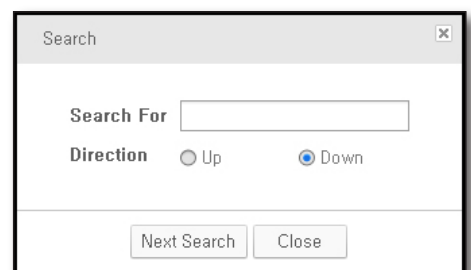
To rename a camera

1. Press the [F2] or click the selected camera once again.
The camera name will be activated.
2. Provide a desired name for the camera.



To find a camera

1. With the camera list active, press the key combination of [Ctrl+F].
2. When the Search dialog pops up, enter the camera name in <Search For>.
3. Click [Next Search].



To select a tile

HowTo 1 : Select a tile and double-click a Desired camera.

The video from the selected camera will be displayed in the highlighted screen.

HowTo 2 : Select a camera and drag and drop it to a desired tile.

HowTo 3 : Drag and drop the selected camera video tile to a desired tile.

The screen will switch to display the video from the selected camera.

ALARM OUT LIST & CONTROL

When the device is connected successfully, you will see a list of Alarm Out events.

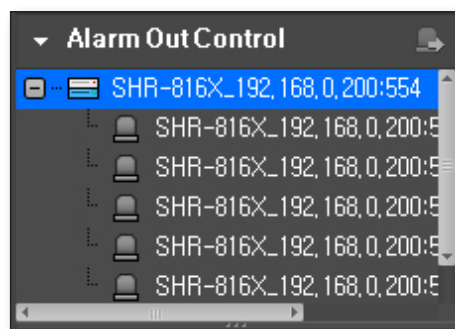
To control the Alarm Out

You can control the Alarm Out events of a device.

1. Select a list of Alarm Out events.
2. The list will be sorted by the occurrence time in the ascending order.
3. Click the Control button in the title bar of the Alarm Out event. This is a toggle button that can be switched according to the Alarm Out status.

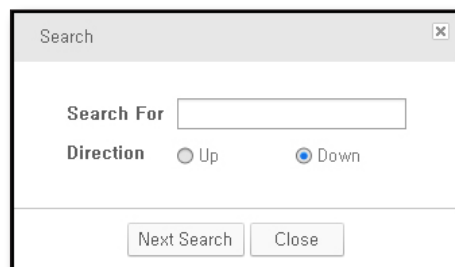


- Depending on the device, control of the Alarm Out may not be available.



To find an alarm

1. With the camera list active, press the key combination of [Ctrl+F].
2. When the Search dialog appears, provide an alarm name for <Search For>.
3. Click [Next Search].






EVENT LIST

You can check the events that occurred from the device.

If an event occurs, the event video will be displayed automatically, of which you can change the settings in the <Setup> menu.

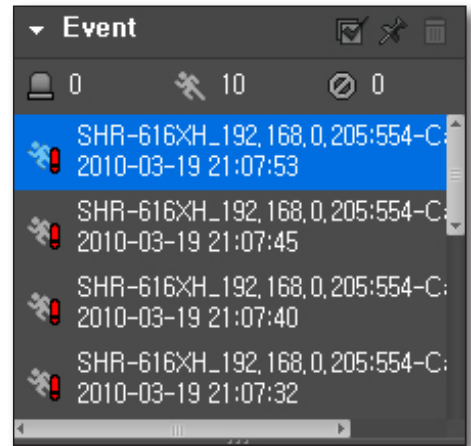
Event icons & description

In the event list, the icon to the left of each event will show the event information.

1.  : Displays the occurrence of the event.
2.  : Displays the occurrence of the video loss.
3.  : Displays the occurrence of the alarm.



- When an event occurs for the first time, the red exclamation mark symbol will be displayed.
- The occurrence count of each event will be shown in the top area of the event list.

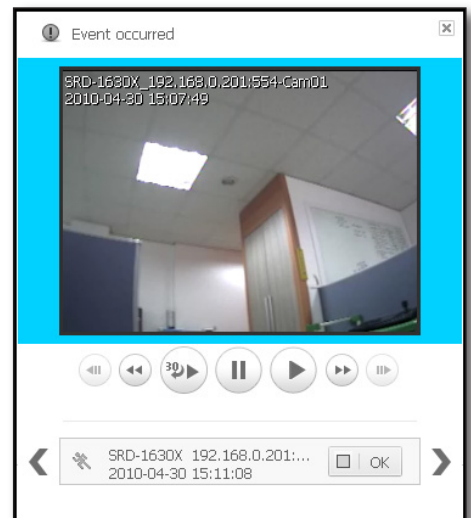


To check the event

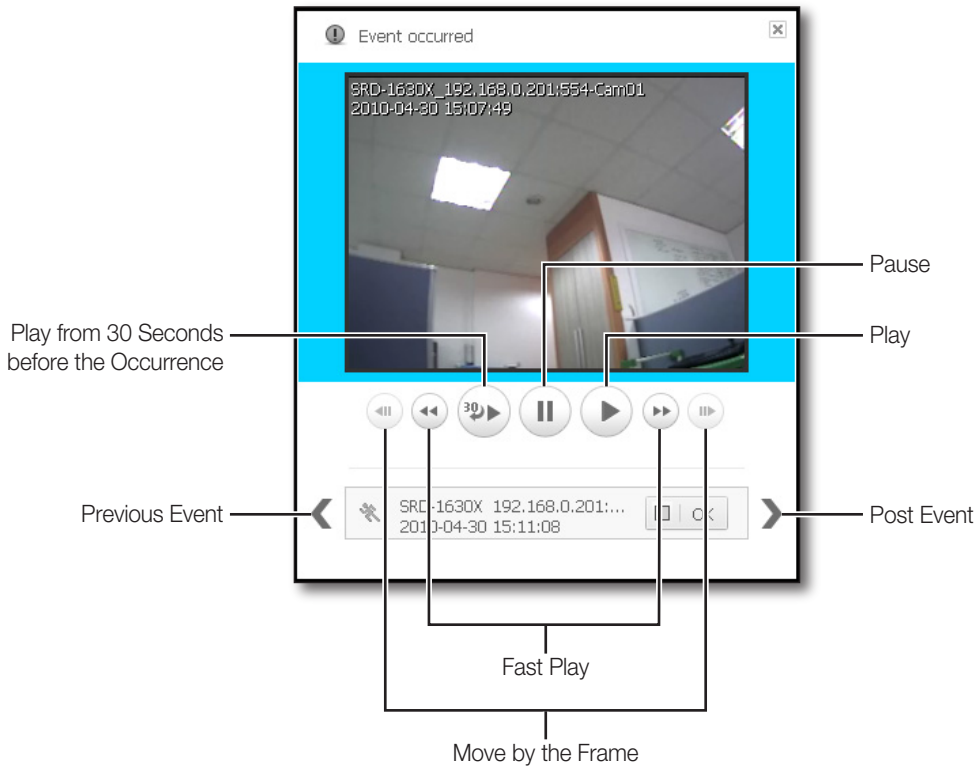
1. The event list separates user-checked events from those that you didn't check.
2. Double-click the event list.
You can check the video at the event occurrence time on a popup window.
3. From the event popup, click [OK].
The event status will be switched to Confirmed.



- If you click the Close button in the top right corner of the event popup, the video window will be closed without confirmation of the event.



Name and function of each item in the Event window




To check the entire events


1. From the top of the event list, click [Clear Event ()].
2. Check all the events that are not confirmed
For the event that is confirmed, the Unconfirmed icon in the right side will disappear.

To lock scrolling of the event list

1. From the top of the event list, click [Scroll Lock ()].
With the scrolling locked, the scroll bar will not move even if an event occurs.
2. To release the scroll lock, click the button again.
The background color of the list window will disappear.

To remove the event list

1. Select an event to remove from the event list.
2. From the title bar of the event list, click [Remove ()] to remove the selected list.

-  Unconfirmed events in the list window will not be deleted.
- You can check the list of events in the log area.






LIST OF DEVICE STATUS INFORMATION

You can check the status of the device.

To check the status information

1. Select a device status list.
2. Check the status of the selected device.
Information including device status, name and occurrence time will be shown.

Device Icons & Description

1.  : Start HDD recording
2.  : HDD failure
3.  : Stop HDD recording
4.  : Disconnected from the device
5.  : Connection success/failure

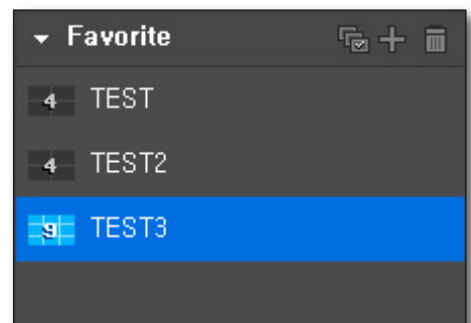


FAVORITE LIST

Favorite is to save the current split mode setting and the videos from the cameras on the current screen. The Favorite feature is available only if you access the group.

To add a favorite item

1. From the favorite item, click **[Add (+)]**.
You can add up to 10 favorite items.
2. Select a site in the tree and press the **[Enter]** key.
The current split mode and the videos from the camera on the screen will be saved in the name you entered.
 - Click the selected favorite list or press **[F2]** on the keyboard to rename it.
 - You can add up to 10 favorite lists.



To import a favorite item

1. From the favorite list, double-click an item to import.
2. The favorite contents of the selected item will be applied on the screen.

To delete a favorite item

1. From the favorite list, select an item to delete.
2. Press the **[Delete]** key on the keyboard.
The selected item will be deleted.

To switch the favorite item

1. From the Favorite title bar, click **[Sequence ()]**.
2. The items of the selected favorite will be displayed one by one on the screen at a specified interval.
After the last item is displayed, the screen will display back to the first item.

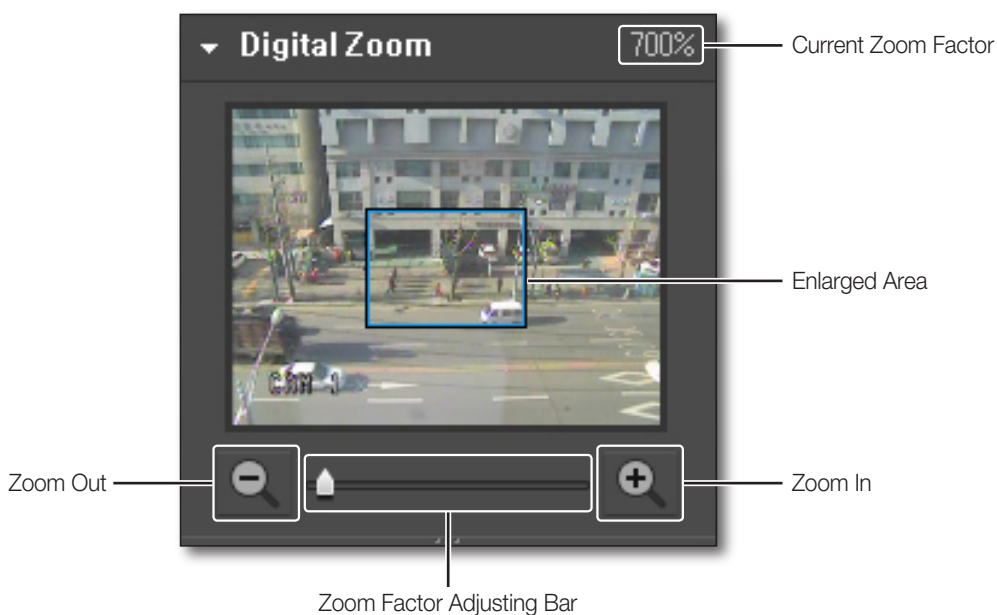
-  In sequence mode of the favorite items, the following menus or functions will be disabled: disconnect, listen to sound, zoom in/out, screen sequence, favorite sequence, digital zoom, save favorites, delete favorites.

DIGITAL ZOOM

Digital Zoom is to enlarge the screen image using the magnifier function. This is an enlarged image on the screen; however, it is different from the optical zooming. The maximum factor of the digital zooming is x100 (10000%).


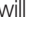
Name and function of each item in Digital Zoom

For the zooming purpose, you can use the buttons in the Digital Zoom list window as well as those in the bottom of the video window.





live viewer

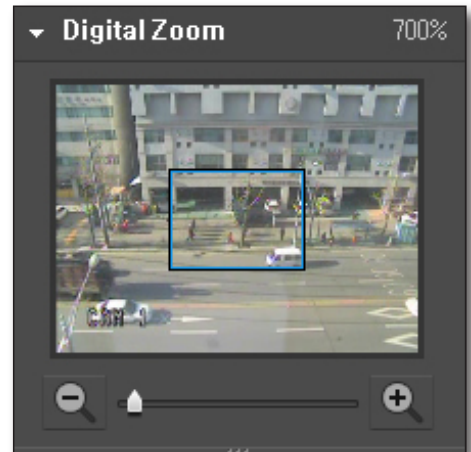
To select a digital zoom area

1. Click the [Zoom In ()] button on the bottom.
The shape of the mouse pointer will switch to .
2. Click an image to zoom in or select an area to enlarge.
The selected image will be enlarged 100% per click.
For a selected area, it will fit the screen.
3. Click the Zoom In button again.
The shape of the mouse pointer will switch to normal and the zoom mode will be released.




Digital zoom out

1. Click the [Zoom Out ()] button on the bottom.
The shape of the mouse pointer will switch to .
2. Select an image.
The selected image will be collapsed 100% per click.
3. Click the Zoom Out button again.
The shape of the mouse pointer will switch to normal and the zoom mode will be released.

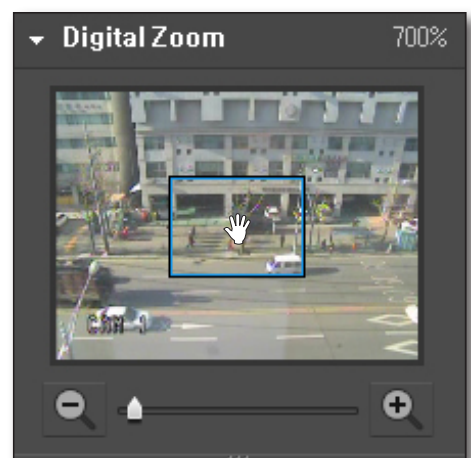


To exit the digital zoom

1. Click the [Restore the default ()] button on the bottom.
2. The selected area will return to the default size and the digital zoom mode will be released.

To navigate through the screen area using the Pan cursor

1. In zoom-in mode, move the cursor to the area box on the enlarged screen.
The cursor will switch to the Pan cursor.
2. With the Pan cursor active, click the mouse left button.
The Pan cursor switches its shape.
3. While pressing and holding the mouse button, move the cursor to the area box.

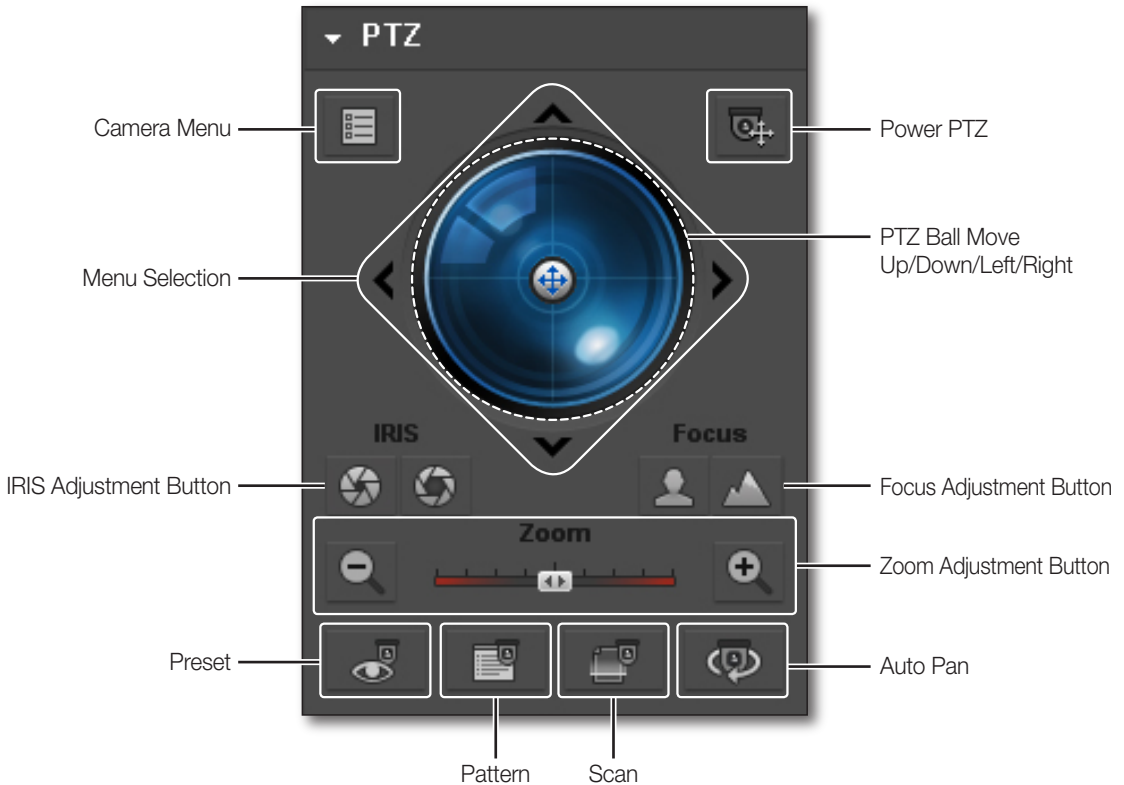


PTZ CONTROL

If the connected device supports the PTZ functions, you can control the PTZ camera remotely.

- Some connected cameras may not support PTZ function. For more information, refer to camera's user manual.

Name and function of each item in the PTZ Control window



To configure the Camera Menu

Click the Camera Menu button to toggle the display of the camera menu on the screen.

- Use the direction buttons around the PTZ ball to move to a desired item.
- To select an item, simply click the PTZ ball.

To adjust the Power PTZ

This is a toggle button that moves the selected position to the center of the screen if clicked.

To control the direction

If you click a nearer position from the center, the focus moves in that direction slowly; if clicking a farther position, the focus does that fast.

- Keep clicking on a left-side area to turn the lens clockwise; keep clicking on a right-side area will turn the lens counter clockwise.

live viewer

To adjust the IRIS

This is to adjust the level of the exposure to the light.

- Close IRIS : As the iris exposure is greater with a lesser light intensity, the scene gets dark.
- Open IRIS : As the iris exposure is lower with a greater light intensity, the scene gets bright.

To adjust the focus

This is to adjust the focus manually.

- Focus Near : Shifts the focus nearer.
- Focus Far : Shifts the focus farther.

To control the zoom

1. Select the PTZ button in the left.

2. Click the zoom slide bar.

You can control the zooming of the image.

- Clicking on a right-side area from the center will zoom in the area; the farther area you click, the faster the zoom-in focus moves.
- Clicking on a left-side area from the center will zoom out the area; the farther area you click, the faster the zoom-out focus moves.

To control the preset

You can save a specific position of the camera in advance or move to a predefined position.

If you click the Preset button, the preset list in the camera will be displayed.



■ You can add up to 20 presets.

- If you select a preset item in the list, the camera focus will move to the predefined position of the preset.
- Provide a name for the list and click **[Add]** to save the current position as a preset.
- If you select a specific item in the list and click **[Delete]**, the selected item will be removed from the list.

To control the scan

Scan enables you to navigate through the preset list one item by one.

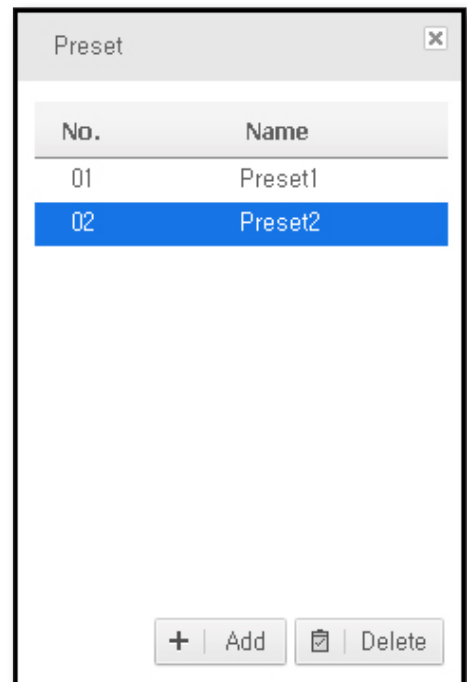
You have only two options: activate/deactivate the **[Scan]** function.

To control the auto pan

Auto Pan will repeat moving the focus between two different points.

You can set to rotate or repeat moving a specific range.

You have only two options: activate/deactivate the **[Auto Pan]** function.

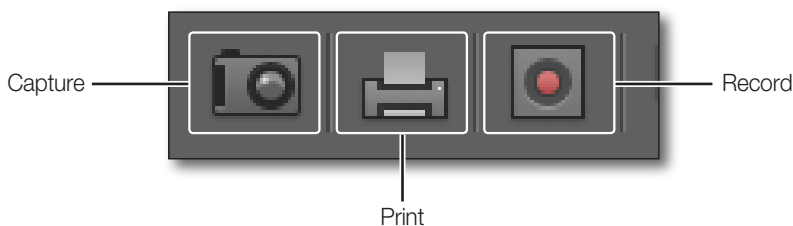


To control the pattern

Pattern will perform the predefined movement and zooming of the camera.
You have only two options: activate/deactivate the **[Pattern]** function.

TO CONTROL THE VIDEO OF THE LIVE VIEWER

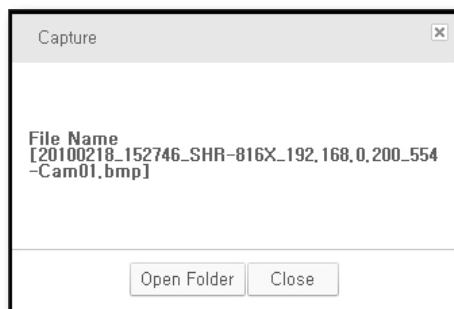
You can save, print or record the video on the video screen of the selected camera.



To capture the screen

This is to capture the video on the video screen in the picture format.
The screen will be saved in a predefined picture format in the Setup menu where you can choose between bmp and jpg.

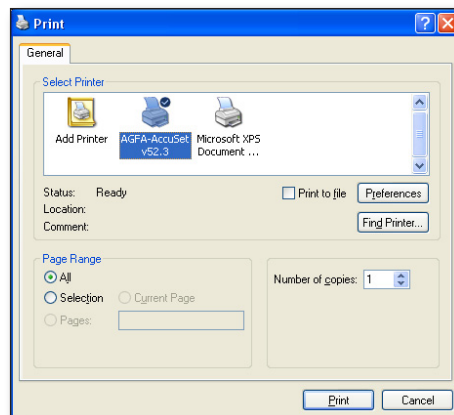
1. Click **[Capture (📷)]** on the bottom of the video screen.
2. The selected video image will be saved in the selected format with a popup message showing the file path.
3. To move directly to the file path, click **[Open Folder]**.
The Explorer window appears where you can check a list of files in the folder.



To print the screen

This is to print out the video on the video screen using the connected printer.

1. Click **[Print (🖨️)]** on the bottom of the video screen.
2. The Print dialog appears where you can print out the current video image.
 - The user with no printing permission will not be allowed to make a printout after logged in.




live viewer

Record

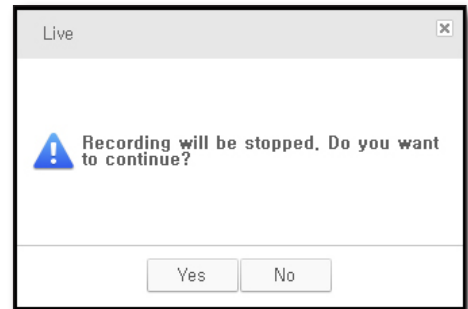
This is to record the video on the selected video screen in a video format.

The video will be saved in the proprietary format with the dedicated viewer included.


1. Click **[Record ()]** on the bottom of the video screen.
2. When the recording starts on the selected video screen, the record icon will be active.
3. To stop recording, click the record button again.



- You can record a maximum of 2 hours of video at once; however, you can change the maximum recording time in the Setup menu.
- Recording will automatically stop at the end of the specified recording time.
- In sequence mode, the record function will be disabled.
- You will encounter a warning message if you try to move to a different screen from the current recording screen, change the viewer or close the application.



To fit the screen

1. Click **[Full Screen()]** on the bottom of the video screen.
The current video will be enlarged to the full screen.
2. To exit the full screen mode, press **[Esc]** on the keyboard.



To select a split mode

You can select a split mode on the video screen.


- 4:3 aspect ratio : 1/4/9/16/25/36
- 16:9 aspect ratio : 1/6/12/20/30



Video Sequence

This is to transit the camera video screen automatically.

This is useful especially if the number of connected cameras is greater than the split screens, as many cameras as the split screens will be displayed in the first sequence and the remaining cameras in the next sequence, and so on.

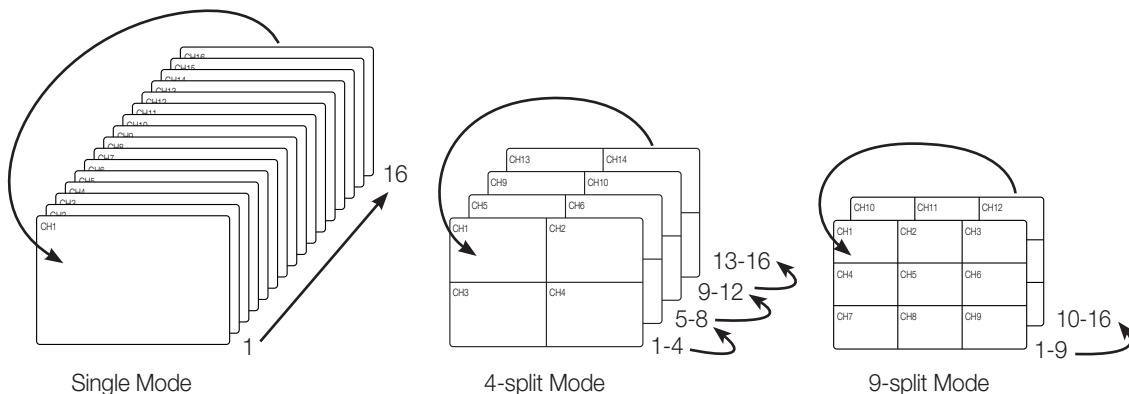
1. Click [Sequence ()] on the bottom of the video screen.
Auto sequence will be performed to fit the current split mode.
2. To exit the auto sequence mode, click Sequence again.



- You can change the sequence interval in “Setup > Viewer > Sequence”. (page 33)
- In auto sequence mode, the following menus or functions will be disabled: disconnect, listen to sound, zoom in/out, screen sequence, favorite sequence, digital zoom, save favorites, delete favorites.

Ex) If two DVR are connected, DVR 1 has 16 cameras connected and DVR 2 has 8 cameras connected in a 9-split screen mode, the monitor screen will be displayed as follows:

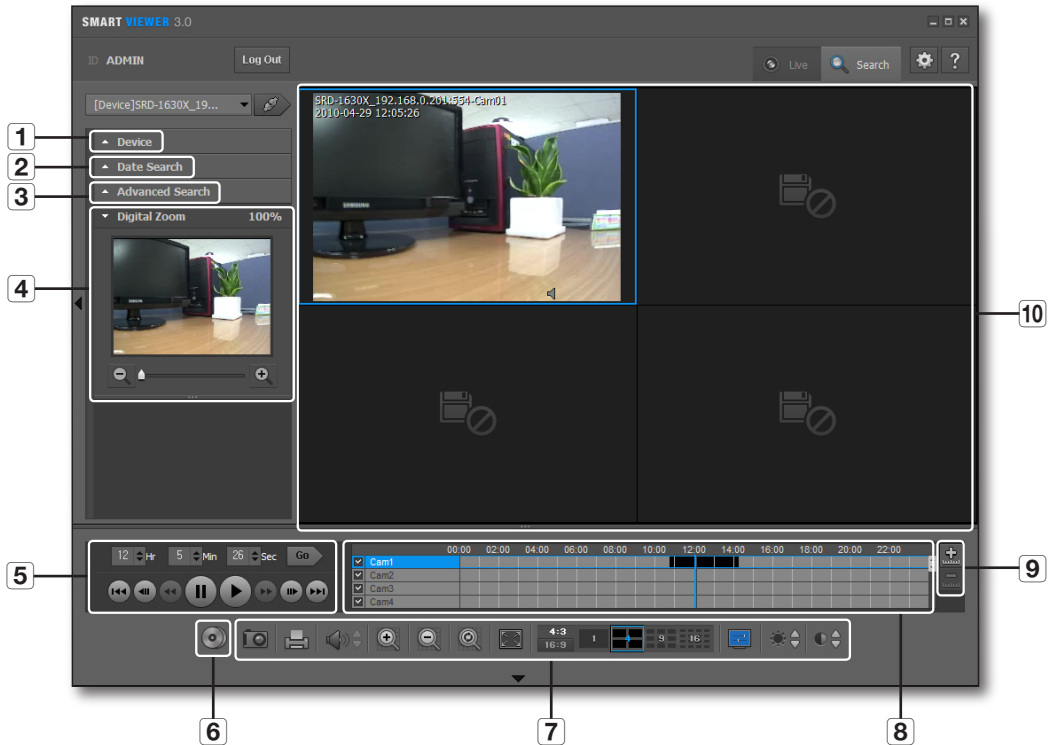
#1 ~ #9 cameras of DVR 1 → #10 ~ #16 cameras of DVR 1 + #1 ~ #2 cameras of DVR 2 → #3 ~ #8 cameras of DVR 2



search viewer

From the top right corner of the SmartViewer main screen, click the [Search] tab.




NAME AND FUNCTION OF EACH ITEM IN SEARCH VIEWER



Item	Description
1	Device List Displays a list of devices available.
2	Date Search Displays the recording history.
3	Advanced Search Displays the search options available.
4	Digital Zoom Displays a digital-zoomed image.
5	Time Search/Play Bar You can specify the search time and play the data found.
6	Backup You can backup a desired time range of the data.
7	Video Screen Control Bar Use the buttons to control the video screen. For more information, see "Name and function of each item in Live Viewer". (page 10)
8	Timeline Displays the data range to save using the color bars.
9	Zoom In/Out Zooms in or out the time range of the data found.
10	Video Screen Displays the data of video found.

Indications of the Video Input Status

You can check the input status of the camera video signal as follows:

1.  : No data
2.  : Disconnected
3.  : Excessive concurrent users

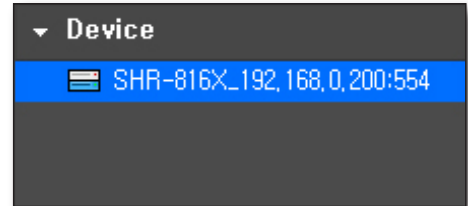
DEVICE LIST

From the device list, you can select a device to search for.

1. Check the list of registered devices.
2. Select a group or device to search for and connect to it.



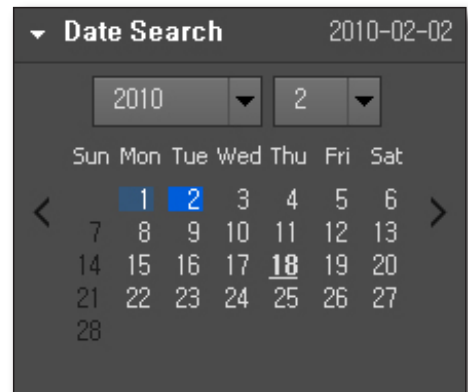
- If you access the search mode, the first listed device will be selected automatically.



DATE SEARCH

The calendar will display the date history of recording data.

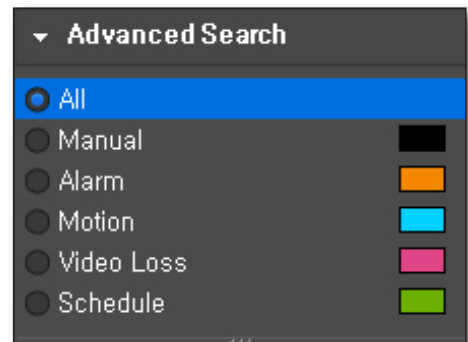
1. Click the date search menu.
The calendar should appear.
2. Select a desired year and month.
The dates of recording data will be highlighted.
3. Select a date to search for.
The recording details on the selected date will be displayed in the result pane.



ADVANCED SEARCH

You can refine your search according to the record type.

1. Click the advanced search menu.
The Advanced Search window appears.
2. Select a desired item to search for.
 - All : You can search for all camera videos from the selected device.
 - Manual, Alarm, Motion, Video Loss, Schedule : The search will be performed on the current screen, whose mode will switch to one-channel (full) screen.




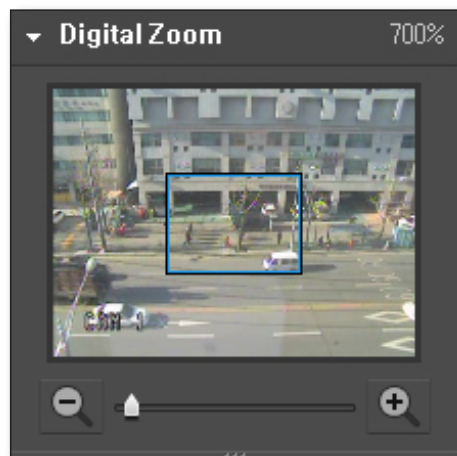
search viewer

DIGITAL ZOOM

Digital Zoom is to enlarge the screen image using the magnifier function.

1. Click the digital zoom selection bar.
2. Double-click a desired camera video.
The selected camera video will be displayed on the digital zoom screen.


-  For using the digital zoom function, see **"Digital Zoom"** (page 19)




SEARCHING FOR PLAYABLE DATA

To specify the play time

The blue vertical line in the result pane indicates the play time of the video.

1. Specify the time to search for.
2. Click the [] button to the right.
The play time will switch to the specified time.

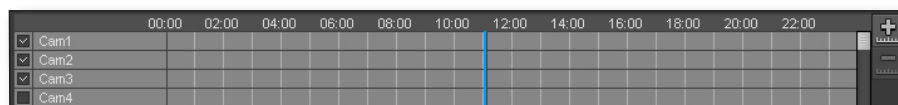


-  You can drag the blue vertical line to change the play time.
 - The time information on the bottom left corner indicates the current play time.

To select a camera to play

If you double-click a camera in the result pane, the video of the selected camera will be added.

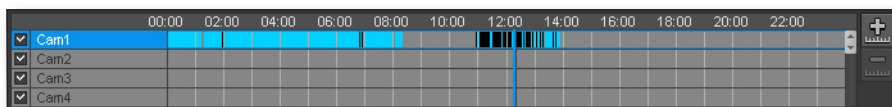
The default of the timeline is 4 channels, where you can expand the area or use the scroll bar to add up to 16 channels for your search.



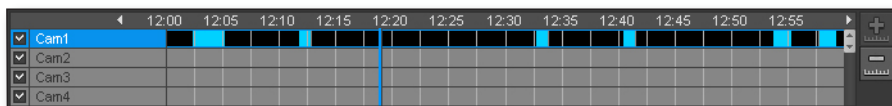
1. Double-click a camera in the result pane, or check the checkbox of a desired camera to select it.
2. From the first empty screen on, the video of the selected camera will be displayed.

-  If you drag and drop a camera in the result pane, the camera video will be added to the selected video window.

To expand the play time



< 24-hour format >



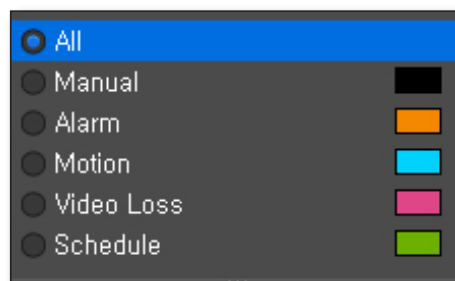
< 1-hour format >

1. Click **[Expand (+)]** in the right corner of the result pane.
2. Based on the play timeline, the play time will be expanded: 24 hrs→12 hrs→6 hrs→2 hrs→1 hr. When the play time is expanded to 1 hour, the Expand button will be inactive while the Collapse button will be active.

To collapse the play time

1. Click **[Collapse (-)]** in the right corner of the result pane.
2. Based on the play timeline, the play time will be expanded: 1 hr→2 hrs→6 hrs→12 hrs→24 hrs. When the play time is collapsed to 24 hours, the Collapse button will be inactive while the Expand button will be active.

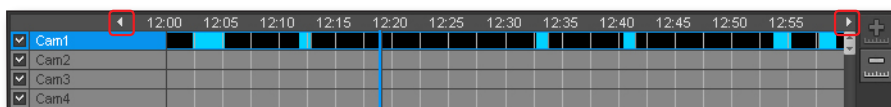
- The recording ranges will be highlighted in different colors, depending on the recording reason.
 - Black : Manual recording
 - Orange : Recording due to an event
 - Blue : Recording due to a motion
 - Pink : Video Loss
 - Yellowish Green : Scheduled recording



To move the play timeline

When a recording data item is found, the current time point will be marked as the play timeline.

1. Select a data item to search for. The current time point will be marked as the play timeline.
2. Click the play timeline and drag and drop it to a desired start time. When the play time table is expanded, use the **[Move (←, →)]** buttons to move the play time earlier or later.



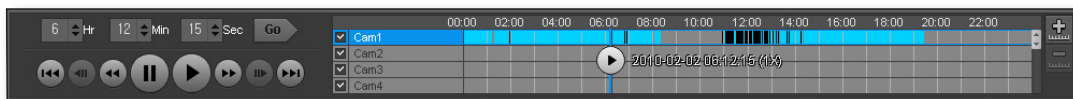
- With the play time table expanded, if you use the arrow button to move to an earlier time and move back to a later time at the end of the earlier time, the timeline will be positioned at the very start point.

search viewer

PLAYBACK CONTROL

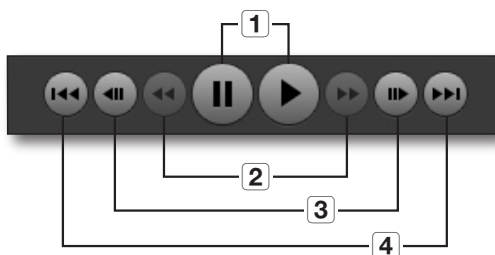
You can stop playing a searched video temporarily or control the play speed.

Play



1. Select an item to play and click **[Play (▶)]**.
The current play speed will be shown in the play time status bar.
2. You can use the play bar to play the video fast or slowly.


Name and function of each item in play bar

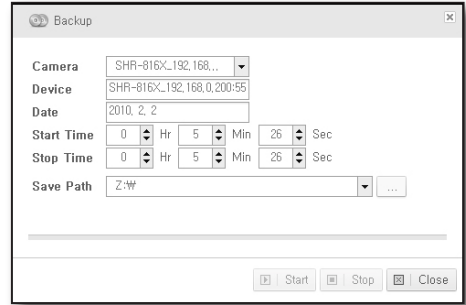


1. Play & Pause
2. Fast forward/backward (inactive in pause mode)
Each time you press the button, the play speed will switch to x2, x4, x8, x16, x32, x64, and back to x2 forward or backward.
3. Frame advance/reverse-frame advance
The video will be played by the frame. The buttons will be inactive during the playback.
4. Skip/Skip backward
Skips playing between events.

BACKUP

You can backup video data to the PC where the program is currently running.

1. Click **[Backup ()]**.
The Backup window appears where you can backup data.
2. In the window, specify the start and end times of your backup.
3. Click **[Start]** to start backup.
4. To stop backing up, click **[Stop]**.
5. To exit the backup, click **[Close]**.
The backed up data till then will be saved before the window is closed.

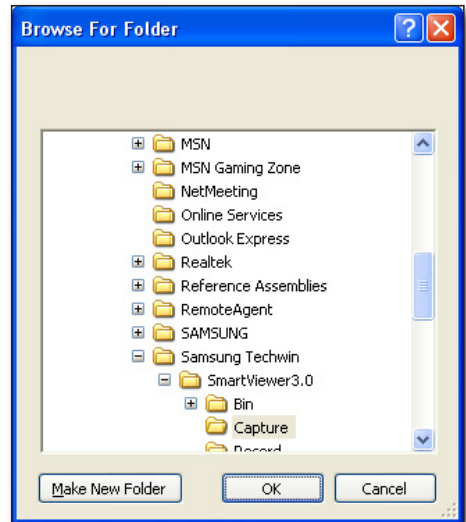


- For the backup format, only “**sec**” is available. The backup viewer to play the backup data is integrated by default. You can view the backup data by launching the viewer.

To change the file path

You can backup video data to the PC where the program is currently running.

1. Click **[Save Path ()]**.
The “Browse For Folder” window should appear.
2. Specify a desired backup path.



setup

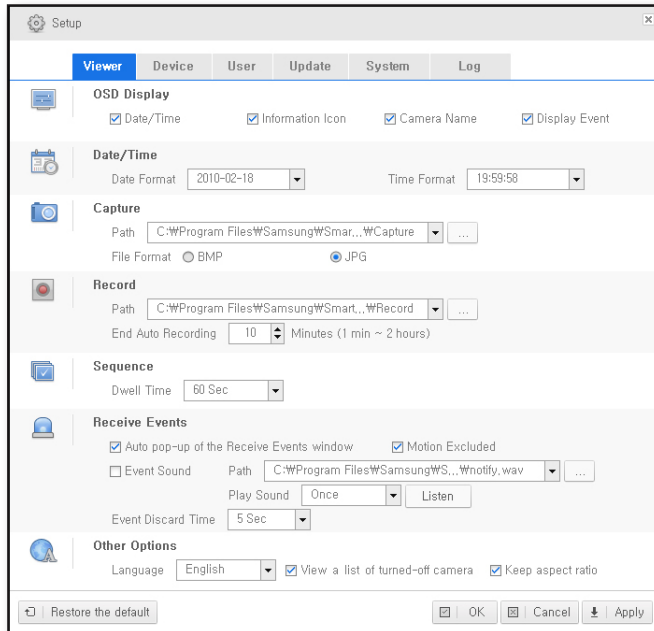
Click [**Setup** ()] in the top right corner of the program screen.

The Setup window consists of several different tabs according to the function.

VIEWER TAB

You can configure the Live Viewer or Search Viewer settings.

When you complete your settings, click [**OK**] or [**Apply**] to apply your settings.



OSD Display

You can display/hide the on-screen information.

Date/Time

If checked, the time and date information will be displayed in the upper area of the video screen.

Information Icon

If checked, the information of PTZ, speaker settings and recording status will be displayed in the lower area of the video screen.

Camera Name

If checked, the camera name will be displayed in the upper area of the video screen.

Display Event

If checked, the event will be displayed in the lower area of the video screen when it occurs.

Date/Time

Specify the date/time format that will be displayed on the video screen.

Date Format

Select one from YYYY-MM-DD, MM-DD-YYYY and DD-MM-YYYY.

Time Format

Choose between hh:mm:ss and hh:mm.

Capture

Specify the picture format and saving location of the captured screen.

Record

Specify the file path and time of recording videos.

You can specify the recording time from 1 minute to 2 hours (120 min).

Sequence

Selecting this will display the camera videos one by one according to the split mode. This can be used also for sequencing favorites if you access the group.

Select a sequence interval from 5, 10, 15, 20, 30, 40, 50 and 60 seconds.

Receive Events

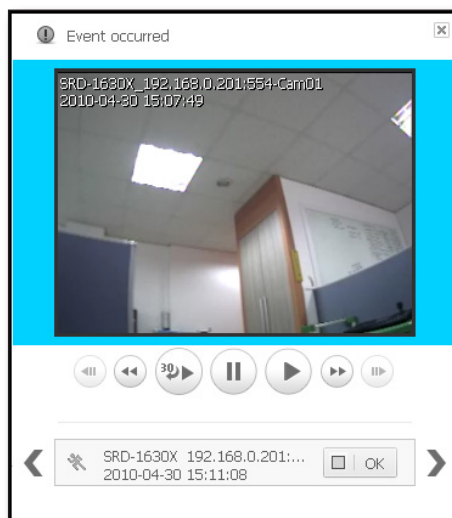
Auto pop-up of the Receive Events window

You can select to create a popup window if there is an incoming event.

If checked, the Receive Events window will pop up when an event occur as shown in the figure to the right.

Motion Excluded

You can select to receive a motion event, one of the event types.

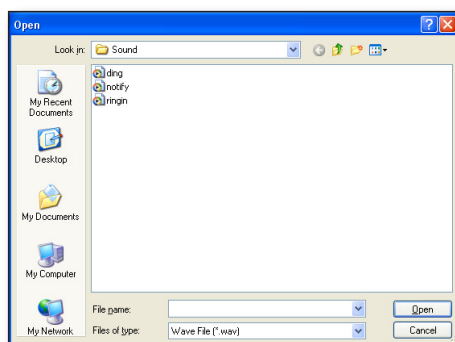


Event Sound

You can select an event sound to output if there is an incoming event.

To change the sound, click **[Set Path (...)]**.

The Open dialog appears when you can specify the path.



Play Sound

You can select to repeat the sound if an event is received.

If set to Continuous, the event sound will not be stopped until you confirm the event.

Event Discard Time

This is a time of disregarding an event if the same event occurs. If the same type of event occurs from the same camera within the specified time, the later event will be discarded.

Others Options

Language

You can select a preferred OSD language for the viewer.

The following languages are available: English, French, German, Spanish, Italian, Simplified Chinese, Japanese, Russian and Korean.



- Your change will be applied right away, but the exiting log information will remain in the previous language.

View a list of turned-off camera

If checked, you will see a list of turned-off cameras.

Keep aspect ratio

If checked, the video will be displayed in its original size.



<Release the aspect ratio>



<Keep the aspect ratio>

Others

Restore the default

This will restore the default settings of the viewer.

OK

The Setup window will be closed with your settings applied to the viewer.

Cancel

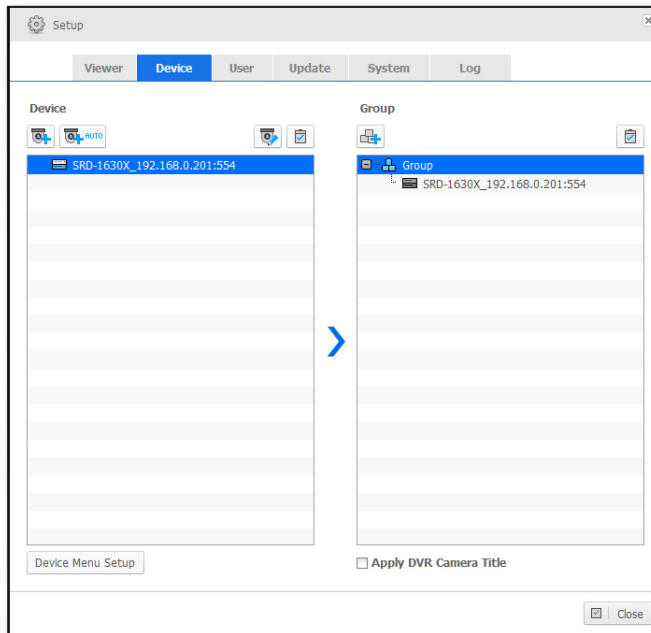
The Setup window will be closed without applying your settings to the viewer.

Apply

Your changes are applied to the viewer.

DEVICE TAB

You can add a device, check a list of registered devices, or change the device settings.



- If you select <Apply DVR Camera Title> before logging into the applicable device or group, the camera ID will be displayed in the list of connected cameras.

Device List

Displays a list of devices that are registered by the user.

To add a device automatically

You can scan for a device in the local network before registering it.

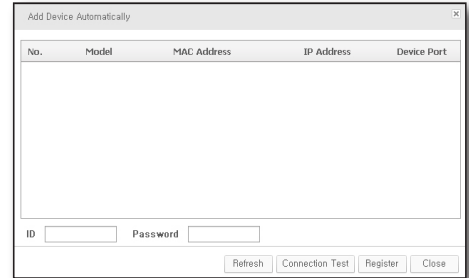
1. Click [Add Automatically].

A list of all devices connected in the local network will be shown in the “**Add Device Automatically**” window. Any registered device will be displayed grey.

2. Select a device to register from the list.

3. Provide the user ID and password, and press the [Register] button.

The user ID and password are the information saved in the device to register.



- This program does not check at registration if the user information is correct.
- If you want to check if the user information is correct, click [**Connection Test**].
- If you encounter an error during the connection test, an error message will appear.

To add a device manually

You can provide information for the device manually that you want to connect to.

1. Click [Add Manually].

The “**Add Device Manually**” should appear.

2. Select the model name of the device that you want to connect to.

3. Select an address type.

Available address types are: static IP, URL, MAC address and ID.

4. Specify setting values necessary for connecting the device.
The information differs depending on the address type.

5. Provide the user ID and password.

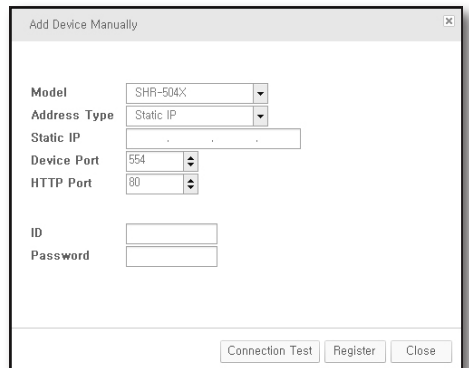
The user ID and password are the information that is set in the device to register.

6. Click [Connection Test].

Use the user-provided information to perform the connection test.

If you encounter an error during the connection test, an error message will appear.

7. Click [Register].



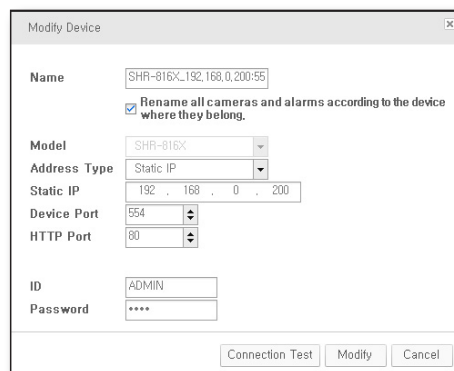
Connection Error Type

- Parameter Error: The parameter is wrong. Check the connection information again.
- Device Connection Error: The device is not connected.
Check if the device is connected to the network properly.
- Network Error: Not connected to the network.
Check if the device is connected to the network properly.
- Redundant Address Error: The same address already exists. (If the IP and the port number are the same)
- Login ID Error: The login ID is not valid. Verify the login ID that you provided.
- Login Password Error: The login password is not valid.
Check the login password again.

To change the device information

You can change the device information.

1. Select a device of which the information you want to change and click **[Modify]**.
You can change all information except for the model name.



To delete a device

1. Select a device to delete.
2. Click **[Delete]**.
The selected device will be deleted.



- You can change or delete the device only when it is disconnected from the network, and you will see a confirmation dialog if you try to change or delete the device while it is connected.

To create a device group

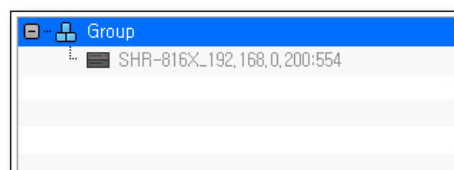
You can create/manage a group of registered devices so that you can access them simultaneously.

1. Click **[Add Group]**.
2. Provide a name for the group to create and click **[OK]**.
The group will be created with the provided name.

To add a device to the device group

You can create/manage a group of registered devices so that you can access them simultaneously.

1. Select a device to add.
2. Click **[Add]**.
You can add a device to the selected group. You can add up to 4 devices.



To delete a device group

1. Select a group to delete.
2. Click **[Delete]**.
The selected group will be deleted.

setup

Device Setup

1. Select a device.

2. Click **[Device Menu Setup]**.

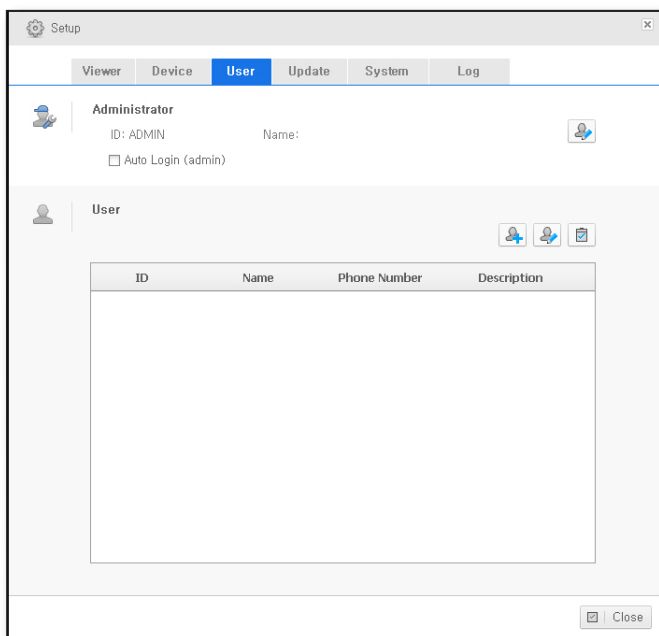
The Device Setup window appears where you can configure the device settings in details.

-  The Setup window may differ depending on the connected device; for more information, see the user manual of the appropriate device.

USER TAB

You can add or delete a user, or change the ID or password.

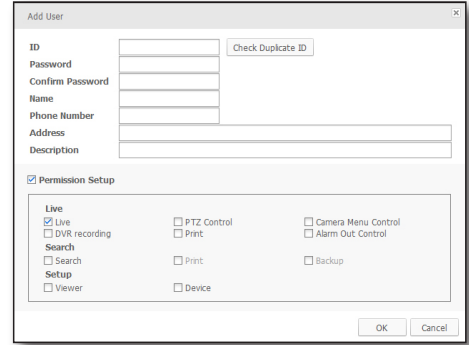
-  If Auto Login (admin) is set, you can launch SmartViewer directly without providing the ID and password.
- The User tab is accessible only with the **"ADMIN"** account.



User List

To add a user

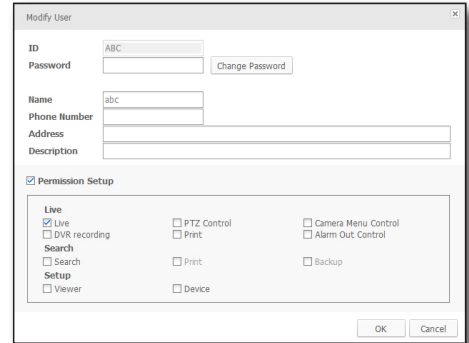
1. Click **[Add User]**.
2. Provide a login ID for the user name.
You can enter up to 31 characters for the ID including alphabets, numeric and '-'.
3. Enter the password.
You can enter up to 31 characters for the password without a space including alphabets, numeric and special characters.
4. Provide additional information such as the telephone number or the address, according to the user.
5. To refine the user permissions, check the **[Permission Setup]** checkbox and select desired options.
6. Click **[OK]**.
The user will be added with the provided ID.



- The "ADMIN" ID is the default ID that is created when the program is installed. This ID cannot be removed. However, you can change the password.

To change the user information

1. Select a user whose information you want to change.
2. Click **[Modify]**.
You can change the user information.



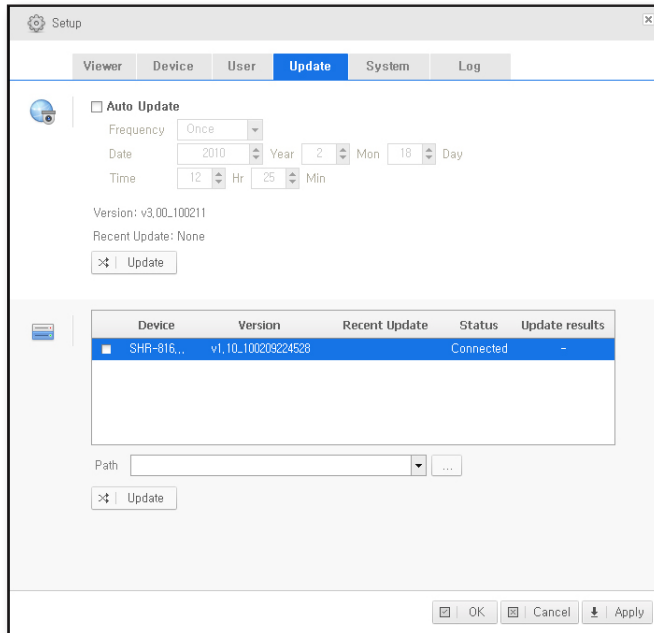
To delete a user

1. Select a user to delete.
2. Click **[Delete]**.
The selected user information will be deleted.

setup

UPDATE TAB

You can update the software via the remote update server.



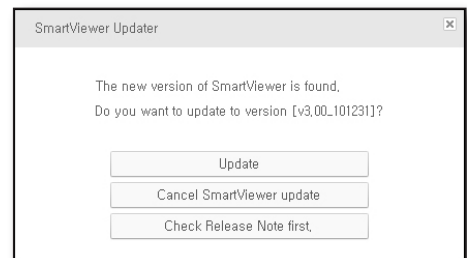
Auto Update

If Auto Update is checked, check if a new software file is available in the server.

To specify the interval of checking the update server

You can specify the interval of checking the update server.


1. Specify the interval and the date.
Select one from once/everyday/every week/every month, and you can specify the date/time according to your selection.
2. If a new software file is found in checking the update server, the fact will be notified to the user who can select to perform the update.
3. Click **[Update]**.
Regardless of the Auto Update setting, the program will check if there is a new software file available in the update server.



To update the device

To update the software of the device, you should save the new software file to your PC in advance.

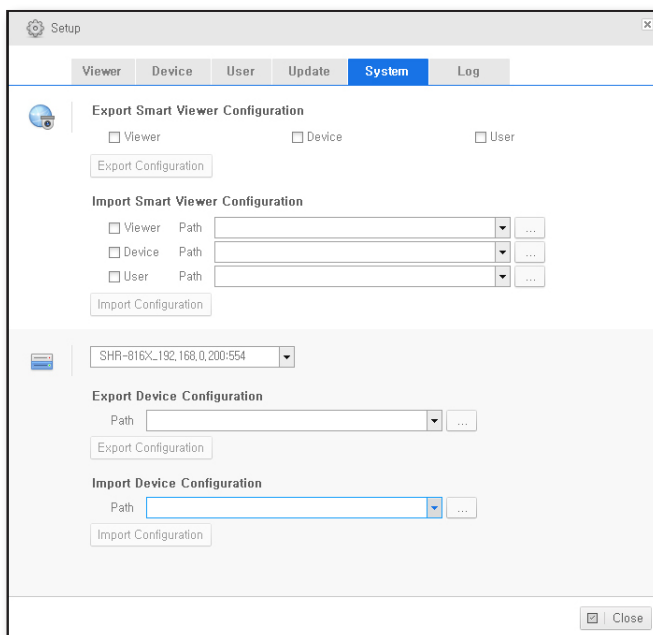
1. Select a device to update.
2. Select the new software for the update.
3. Specify the path of the update file.
4. Click **[Update]**.
The program will start being updated with the update status displayed.

-  You can update multiple devices simultaneously and the update result will be displayed in the status bar.
- Model SVR-1670 is not available for the update.



SYSTEM ADMINISTRATION TAB

You can save the configuration files of SmartViewer and DVR as a file, or import those files.



Manage SmartViewer Configuration

You can export the SmartViewer configuration file.

Export Smart Viewer configuration

You can save the SmartViewer configuration as a file.

1. Check the checkbox and select configuration items.
2. Specify the path of saving the items.
3. Click **[Export Configuration]**.
The configuration items will be saved as a file and the result will be displayed in a message popup.

Import Smart Viewer configuration

You can import and read the SmartViewer configuration items as a file.

1. Select a configuration item to import.
2. Select the file that is saved.
3. Click **[Import Configuration]**.
The configuration items will be read from the file.

Manage Device Configuration

Export Device Configuration

You can save the device configuration as a file.

1. Select a device to save the configuration.
2. Specify the path of saving the file.
3. Click **[Export Configuration]**.
The configuration will be saved as a file and the result will be displayed in a message popup.

Import Device Configuration

You can read the device configuration from the configuration file.

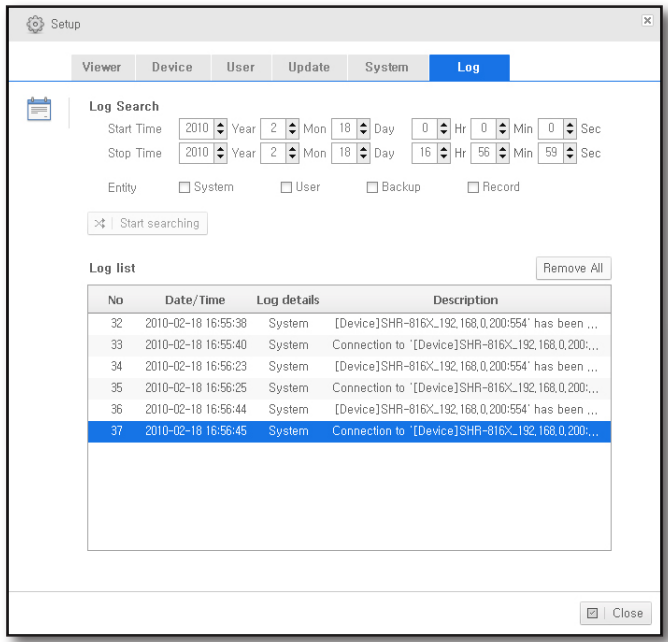
1. Select a configuration item to import.
2. Select the file that is saved.
3. Click **[Import Configuration]**.
The configuration items will be read from the file.



- You can import or export the configuration of model SVR-1670 in "**Device > Device Menu Setup**". (page 38)

LOG INFORMATION TAB

You can search for system-related logs by the occurrence time and by the item.



1. Specify the start and end times for the log search.
2. Click the checkbox of a desired log item to select it.
3. Click **[Start searching]**.
The log information will be displayed in the log list.
4. To delete the list of logs that you have searched for, click **[Remove All]**.

